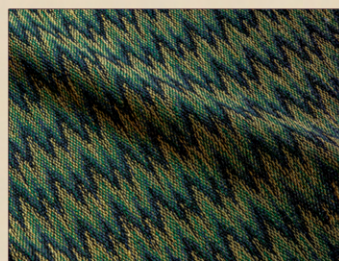


Vetta

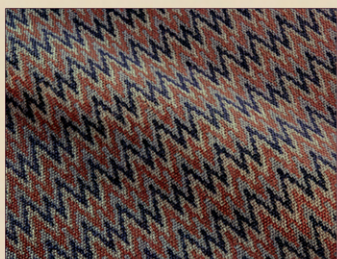
A reversible, small-scale Flamestitch design:
strong and rich, or soft and muted.



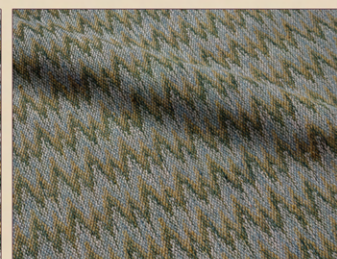
Arazzo 2009-20



Firenze 2009-21



Palermo 2009-22



Toscana 2009-11



Venezia 2009-10

Vetta is a flame stitch, also known as Florentine stitch or Bargello after the fabric on four 17th century chairs in the Bargello Museum in Florence. But whatever you call this wonderful graphic design, it is characterised by long vertical stitches in bold colours zigzagging horizontally across the fabric into peaks and valleys, often in a large scale.

Our Vetta falls squarely into the tradition, but with certain refinements. It is constructed to be reversible, so that if you prefer, the strong design and rich colours can become muted and soft. The scale is smaller than is typical, making it easier to scheme with other fabrics and diminishing the chance that it will overwhelm a room with dizzying optics. Early examples of flame stitch were embroidered of wool on canvas and were durable enough to be used for upholstery, cushions and even carpets. Vetta is woven of fine cotton yarns and has a soft welcoming touch. Think of it as your favourite Missoni dress or neck tie suddenly available to come back to life as your headboard.

78% Viscose, 22% Cotton

Vertical repeat: 2.8 cm / 1.1 inches
Horizontal repeat: 3.4 cm / 1.3 inches
Width: 136 cm / 53.5 inches

Made in Italy