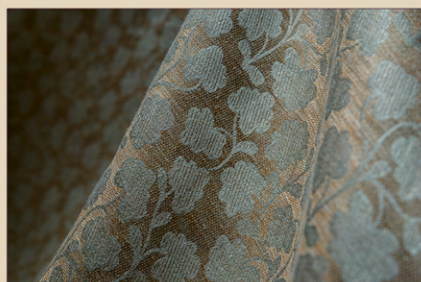
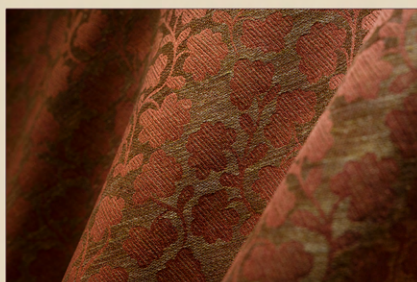


## Aventino

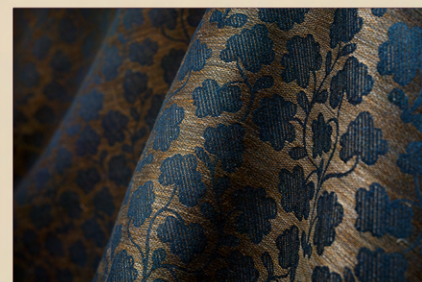
They say that, “Good design is forever”  
and this beautiful, medium-scale jacquard is proof.



Capri 2004-08



Pompei 2004-13



Ravello 2004-16



Sabbia 2004-02



Tiziano 2004-12



Venezia 2004-10

Aventino has the happy quality of being successful as either the star of the show or a supporting actor.

Inspired by a second century plate in the Bargello Museum in Florence, it features a stylized flowering vine climbing up over a horizontally striped background. We kept the scale very close to the original porcelain design, allowing great flexibility for designers to use it in both contemporary and traditional settings.

Named after the southernmost of Rome's seven hills, Aventino is available in six sumptuous colours. It has the signature cool crisp hand of 100% linen, reminiscent perhaps, of the cooler air in the elegant neighbourhood that is its namesake, high above the city centre.

100% Linen

Vertical repeat: 22.5 cm / 8.8 inches  
Horizontal repeat: 17.5 cm / 6.9 inches  
Width: 140 cm / 55.1 inches

Made in Italy