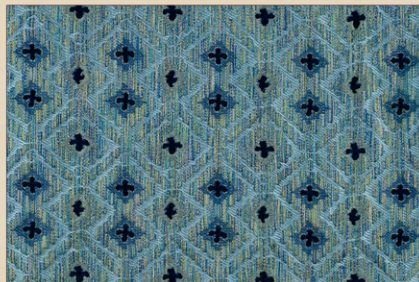


Alatri

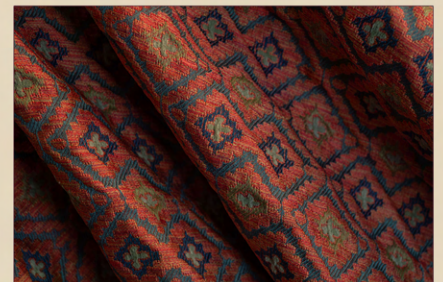
A medium scale trellis design punctuated with chenille crosses, both superimposed over a rich strie ground.



Ambra 2007-26



Azzurro 2007-18



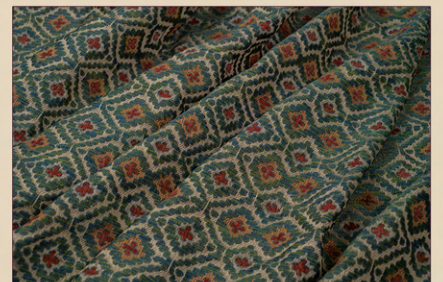
Palermo 2007-22



Roma 2007-25



Siena 2007-28



Venere 2007-27

Alatri is named after a hilltop town in the Lazio region of Italy known for its megalithic acropolis surrounded by polygonal walls.

This is circled further down by another wall protecting the medieval settlement. The walls within walls of the town reminded us of the double trellis in a design we were working on.

A medium-scale lampas, our Alatri has chenille crosses punctuating the diamond trellis, both superimposed over a rich strié ground.

Less formal than a traditional silk lampas, the effect is handsome and cosy, perfect for armchairs, chair seats and ottomans.

50% Cotton, 27% Viscose, 23% Linen

Vertical repeat: 14 cm
Horizontal repeat: 8.8 cm
Width: 140 cm

Made in Italy